

## Eccles Muff Couplings - Aluminium



### PRODUCT CODES:

**Table ANSI 150**

Item Code	Description
ECC-MC50AL-A	Al 50mm Muff Coupling Complete 69-71mm Hose, ANSI 150
ECC-MC50-76AL-A	Al 50mm Muff Coupling Complete 75-77mm Hose, ANSI 150
ECC-MC75AL-A	Al 75mm Muff Coupling Complete 102-104mm Hose, ANSI 150
ECC-MC100AL-A	Al 100mm Muff Coupling Complete 125-129mm Hose, ANSI 150
ECC-MC125AL-A	Al 125mm Muff Coupling Complete 152-157mm Hose, ANSI 150
ECC-MC150AL-A	Al 150mm Muff Coupling Complete 180-184mm Hose, ANSI 150
ECC-MC200AL-A	Al 200mm Muff Coupling Complete 234-238mm Hose, ANSI 150
ECC-MC250AL-A	Al 250mm Muff Coupling Complete 284-290mm Hose, ANSI 150
ECC-MC300AL-A	Al 300mm Muff Coupling Complete 343-349mm Hose, ANSI 150
ECC-MC350AL-A	Al 350mm Muff Coupling Complete 390mm Hose, ANSI 150
ECC-MC400AL-A	Al 400mm Muff Coupling Complete 458mm Hose, ANSI 150

**Table D**

Item Code	Description
ECC-MC50AL-DE	Al 50mm Muff Coupling Complete 69-71mm Hose, Table D & E
ECC-MC50-76AL-DE	Al 50mm Muff Coupling Complete 75-77mm Hose, Table D & E
ECC-MC75AL-DE	Al 75mm Muff Coupling Complete 102-104mm Hose, Table D & E
ECC-MC100AL-D	Al 100mm Muff Coupling Complete 125-129mm Hose, Table D
ECC-MC125AL-DE	Al 125mm Muff Coupling Complete 152-157mm Hose, Table D & E
ECC-MC150AL-D	Al 150mm Muff Coupling Complete 180-184mm Hose, Table D
ECC-MC200AL-D	Al 200mm Muff Coupling Complete 234-238mm Hose, Table D
ECC-MC250AL-D	Al 250mm Muff Coupling Complete 284-290mm Hose, Table D
ECC-MC300AL-D	Al 300mm Muff Coupling Complete 343-349mm Hose, Table D
ECC-MC350AL-DE	Al 350mm Muff Coupling Complete 390mm Hose, Table D & E
ECC-MC400AL-DE	Al 400mm Muff Coupling Complete 458mm Hose, Table D & E

Table E	
Item Code	Description
ECC-MC50AL-DE	AI 50mm Muff Coupling Complete 69-71mm Hose, Table D & E
ECC-MC50-76AL-DE	AI 50mm Muff Coupling Complete 75-77mm Hose, Table D & E
ECC-MC75AL-DE	AI 75mm Muff Coupling Complete 102-104mm Hose, Table D & E
ECC-MC100AL-E	AI 100mm Muff Coupling Complete 125-129mm Hose, Table E
ECC-MC125AL-DE	AI 125mm Muff Coupling Complete 152-157mm Hose, Table D & E
ECC-MC150AL-E	AI 150mm Muff Coupling Complete 180-184mm Hose, Table E
ECC-MC200AL-E	AI 200mm Muff Coupling Complete 234-238mm Hose, Table E
ECC-MC250AL-E	AI 250mm Muff Coupling Complete 284-290mm Hose, Table E
ECC-MC300AL-E	AI 300mm Muff Coupling Complete 343-349mm Hose, Table E
ECC-MC350AL-DE	AI 350mm Muff Coupling Complete 390mm Hose, Table D & E
ECC-MC400AL-DE	AI 400mm Muff Coupling Complete 458mm Hose, Table D & E

### SPECIFICATIONS

- The Eccles brand muff coupling fits leading brands of smooth material handling hose. It is ideal for mining applications and in the harshest environments.
- Robust and sturdy, the Eccles muff coupling is trusted to perform on Australian and International mine sites.
- Available in the following drill patterns: ANSI 150, Table D and Table E.
- Internal barded ribs to ensure maximum grip on the hose.
- Marine Grade Aluminium (AS1874 CC601 or equivalent A356)

**WARNINGS:** Special attentions to be paid on notes, photos, images, or drawings of assembly steps marked with the warning symbol.

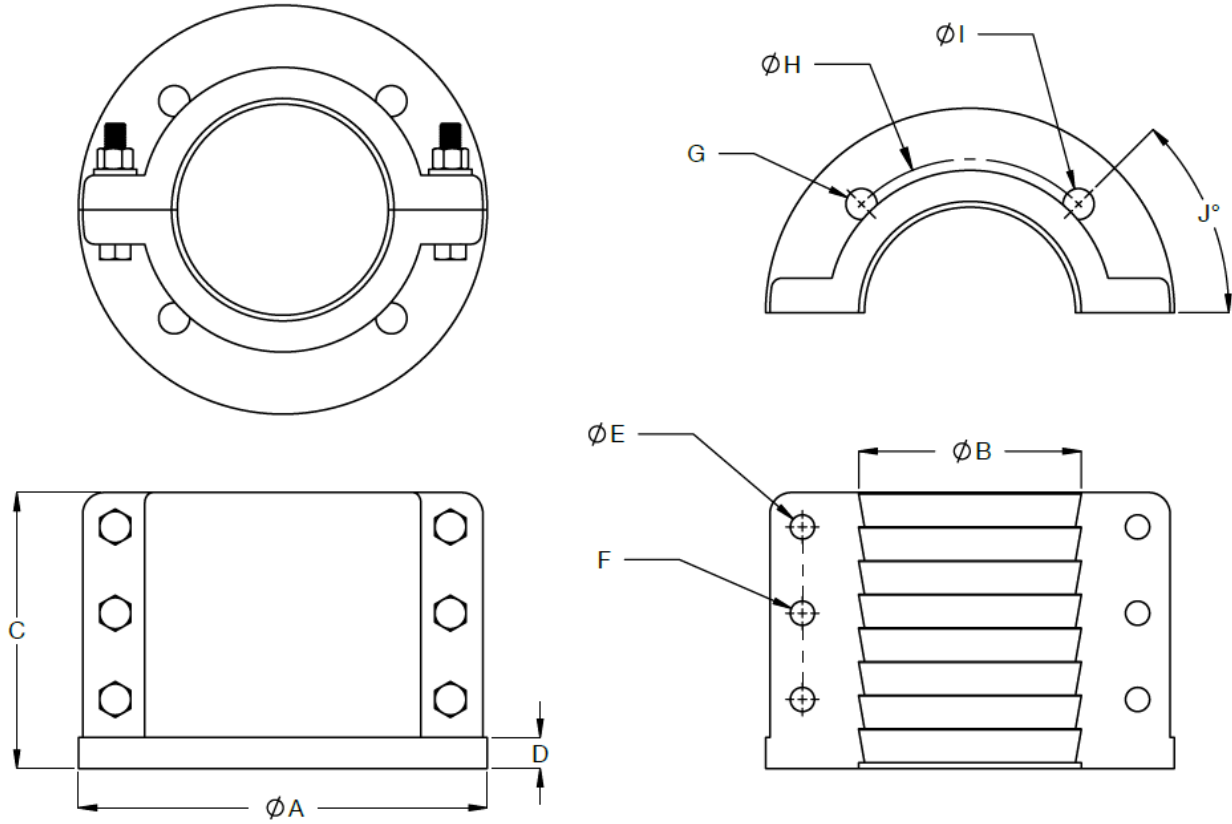


### TECHNICAL DATA

Fixings	Tightening Bolts, Nuts and Washer are supplied
Applicable Hose Diameter	69 – 458 mm (varies per coupling size)
Construction	Aluminium
Finish	Aluminium

**NOTE:** Galvin Engineering continually strive to improve their products. Specifications may change without notice.

**DIMENSIONS**



NOTE: 1) No. of Flange Holes (G) in table are shown per part. For assembly total number of holes, multiply quantity in table by two.



**ECCLES MUFF COUPLING TABLE ANSI 150 (HOLES) FLANGE SPECIFICATION**  
 NOTE: DRILLED HOLES HAVE A  $\pm 1.0$  TOLERANCE

ITEM CODE	NB	A	B	C	D	E	F	G	H	I	J
		FLANGE OD	HOSE OD	COUPLING LENGTH	FLANGE THICKNESS	BOLT HOLE SIZE	NO. OF BOLT HOLES	NO. OF FLANGE HOLES	FLANGE HOLES PCD	FLANGE HOLES SIZE	FLANGE HOLES ANGLE
ECC-MC50AL-A	50mm	155	69-71	96	15	14	4	2	121	19	45
ECC-MC50-76AL-A	50mm	155	75-77	96	15	14	4	2	121	19	45
ECC-MC75AL-A	75mm	196	102-104	112	16	14	4	2	153	19	45
ECC-MC100AL-A	100mm	237	125-129	160	18	14	6	3	191	19	45
ECC-MC125AL-A	125mm	255	152-157	174	18	14	6	3	216	22	45
ECC-MC150AL-A	150mm	307	180-184	190	18	14	6	3	242	22	45
ECC-MC200AL-A	200mm	340	234-238	245	21	14	8	3	299	22	45
ECC-MC250AL-A	250mm	405	284-290	295	24	18	8	5	362	26	30
ECC-MC300AL-A	300mm	500	343-349	342	26	18	8	5	432	26	30
ECC-MC350AL-A	350mm	535	390	350	36	18	10	5	476	28.5	30
ECC-MC400AL-A	400mm	595	458	330	32	18	10	7	540	28.5	22.5

**ECCLES MUFF COUPLING TABLE D FLANGE SPECIFICATION**  
 NOTE: DRILLED HOLES HAVE A  $\pm 1.0$  TOLERANCE

ITEM CODE	NB	A	B	C	D	E	F	G	H	I	J
		FLANGE OD	HOSE OD	COUPLING LENGTH	FLANGE THICKNESS	BOLT HOLE SIZE	NO. OF BOLT HOLES	NO. OF FLANGE HOLES	FLANGE HOLES PCD	FLANGE HOLES SIZE	FLANGE HOLES ANGLE
ECC-MC50AL-DE	50mm	155	69-71	96	15	14	4	2	114	18	45
ECC-MC50-76AL-DE	50mm	155	75-77	96	15	14	4	2	114	18	45
ECC-MC75AL-DE	75mm	196	102-104	112	16	14	4	2	146	18	45
ECC-MC100AL-D	100mm	237	125-129	160	18	14	6	2	178	18	45
ECC-MC125AL-DE	125mm	255	152-157	174	18	14	6	3	210	18	45
ECC-MC150AL-D	150mm	307	180-184	190	18	14	6	3	235	18	45
ECC-MC200AL-D	200mm	340	234-238	245	21	14	8	3	292	18	45
ECC-MC250AL-D	250mm	405	284-290	295	24	18	8	3	356	22	45
ECC-MC300AL-D	300mm	500	343-349	342	26	18	8	5	406	22	30
ECC-MC350AL-DE	350mm	535	390	350	36	18	10	5	470	28	30
ECC-MC400AL-DE	400mm	595	458	330	32	18	10	5	521	28	30


**ECCLES MUFF COUPLING TABLE E FLANGE SPECIFICATION**  
 NOTE: DRILLED HOLES HAVE A  $\pm 1.0$  TOLERANCE

ITEM CODE	NB	A	B	C	D	E	F	G	H	I	J
		FLANGE OD	HOSE OD	COUPLING LENGTH	FLANGE THICKNESS	BOLT HOLE SIZE	NO. OF BOLT HOLES	NO. OF FLANGE HOLES	FLANGE HOLES PCD	FLANGE HOLES SIZE	FLANGE HOLES ANGLE
ECC-MC50AL-DE	50mm	155	69-71	96	15	14	4	2	114	18	45
ECC-MC50-76AL-DE	50mm	155	75-77	96	15	14	4	2	114	18	45
ECC-MC75AL-DE	75mm	196	102-104	112	16	14	4	2	146	18	45
ECC-MC100AL-E	100mm	237	125-129	160	18	14	6	3	178	18	45
ECC-MC125AL-DE	125mm	255	152-157	174	18	14	6	3	210	18	45
ECC-MC150AL-E	150mm	307	180-184	190	18	14	6	3	235	22	45
ECC-MC200AL-E	200mm	340	234-238	245	21	14	8	3	292	22	45
ECC-MC250AL-E	250mm	405	284-290	295	24	18	8	5	356	22	30
ECC-MC300AL-E	300mm	500	343-349	342	26	18	8	5	406	26	30
ECC-MC350AL-DE	350mm	535	390	350	36	18	10	5	470	28	30
ECC-MC400AL-DE	400mm	595	458	330	32	18	10	5	521	28	30

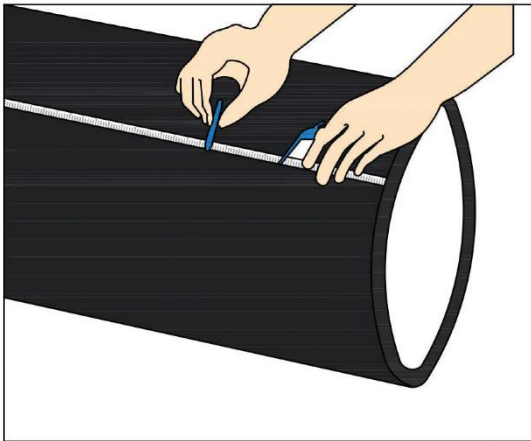
**INSTALLATION**

**INSTALLATION COMPLIANCE:** Galvin Engineering products must be installed in accordance with these installation instructions and in accordance with AS/NZS 3500, the PCA and your local regulatory requirements. Water and/or electrical supply conditions must also comply to the applicable national and/or state standards. Failing to comply with these provisions shall void the product warranty and may affect the performance of the product.

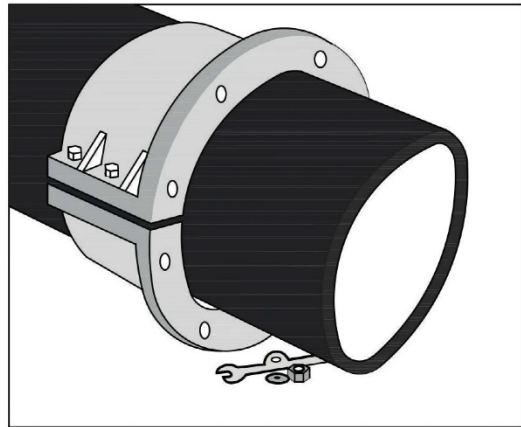
It is recommended that side flange bolts be tightened alternately from one side to the other in several steps before final tightening. The same process used when fitting a car or truck tyre. This will ensure an even fit around the hose.

**DO NOT** tighten all bolts down one side of the flange and then attempt to tighten the opposite series of bolts. 

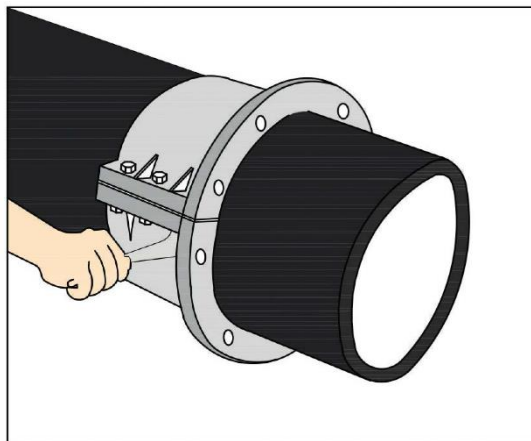
1. Measure and mark the hose to the required length.



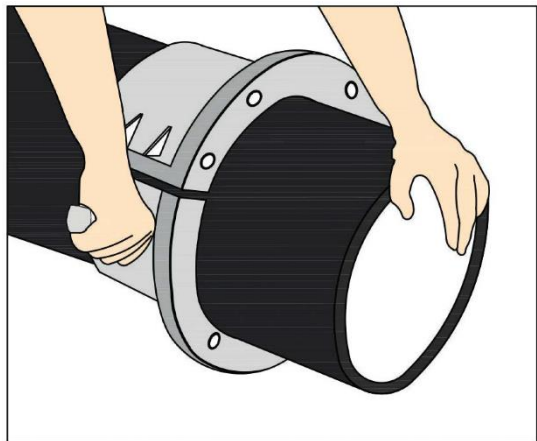
2. Place the two halves of the coupling around the hose approximately 5mm back from your 'mark'.



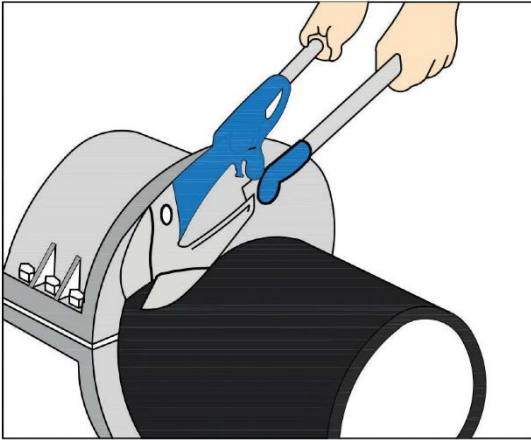
3. Tighten the side flange bolts leaving a gap of approximately 2-3mm. This should provide sufficient grip on the hose.



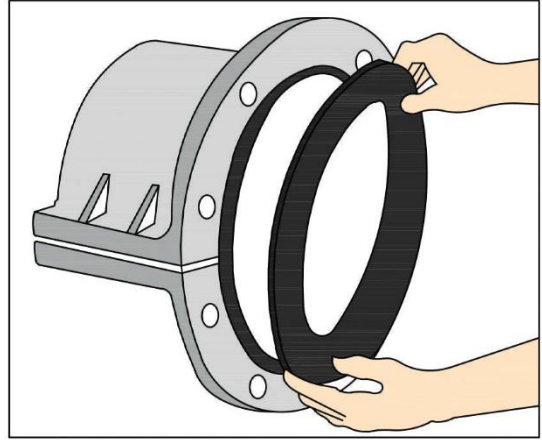
4. Using a long blade knife and soapy water as a lubricant, cut off excess hose. The flange face can be used as a guide for the knife.



5. Using bolt cutters or a hacksaw, cut the two helix wires flush with the end of the hose. The wire must not protrude out of the hose end.



6. An optional cone ring gasket can be installed if sealing becomes a problem. The use of a cone ring gasket is recommended when joining two hoses together.



**TROUBLESHOOTING**

PROBLEM	CAUSE	RECTIFICATION
Coupling cannot be completely fitted/tightened	Screws are all tightened down on one side before proceeding to the other side	Tighten screws alternately (Refer to warning label for special instruction)
Hose cannot be fitted	Incorrect coupling size selected	Refer to Table Flange Specifications for correct hose dimensions applicable per coupling size



**WARRANTY**

The warranty set forth herein is given expressly and is the only warranty given by the Galvin Engineering Pty Ltd. With respect to the product, Galvin Engineering Pty Ltd makes no other warranties, express or implied. Galvin Engineering Pty. Ltd. hereby specifically disclaims all other warranties, express or implied, including but not limited to the implied warranties of merchantability and fitness for a particular purpose.

Galvin Engineering Pty Ltd products are covered under our manufacturer’s warranty available for download from [www.galvinengineering.com.au](http://www.galvinengineering.com.au) Galvin Engineering Pty Ltd expressly warrants that the product is free from operational defects in workmanship and materials for the warranty period as shown on the schedule in the manufacturer’s warranty. During the warranty period, Galvin Engineering will replace or repair any defective products manufactured by Galvin Engineering without charge, so long as the terms of the Manufacturer’s warranty are complied with.

The remedy described in the first paragraph of this warranty shall constitute the sole and exclusive remedy for breach of warranty, and Galvin Engineering Pty Ltd shall not be responsible for any incidental, special or consequential damages, including without limitation, lost profits or the cost of repairing or replacing other property which is damaged if this product does not work properly, other costs resulting from labour charges, delays, vandalism, negligence, fouling caused by foreign material, damage from adverse water conditions, chemical, electrical or any other circumstances over which Galvin Engineering has no control. This warranty shall be invalidated by any abuse, misuse, misapplication, improper installation or improper maintenance or alteration of the product.

Within Australia: 1300 514 074 Outside Australia: P: +61 (0)8 9338 2344

F: +61 (0)8 9338 2340

[sales@galvinengineering.com.au](mailto:sales@galvinengineering.com.au)

[www.galvinengineering.com.au](http://www.galvinengineering.com.au)

ABN: 78 008 719 382

PERTH | SYDNEY | MELBOURNE | BRISBANE | ADELAIDE

